

PROJECT
MANAGEMENT

PLANNING &
DESIGN

CONSTRUCTION
MANAGEMENT

CONSTRUCTION
SUPERVISION

ENGINEERING &
CONSULTING



TOPEC

WE BUILD A BETTER FUTURE

TOPEC ENGINEERING is extending toward
The world, creating a brighter future.

A company based on reliable business operation

We have achieved CM ranking TOP, Corporate credit rating A+, and possess professional experts & engineers in various fields.

A company that expands into the world market

We achieved successful overseas project record and experienced various overseas construction projects.

A company that designs environment & future

We have successfully accomplished various design projects which required specialties based on superior design competence.

A company that values people & technology

We bring up future-oriented talent and pursue sustainable growth by developing specialized core technologies preparing for changes in the business environment.

A company that dreams of a happy society for all

We are looking for society-friendly company that avidly contributes to society through various CSR activities, including habitat, talent donation, and volunteer activities.

A company that pursues safety and health as top priority value

We pursue safety and health of all project sites and employees as top priority value, upon the TOPEC Safety and Health Management System.

CONTENTS

COMPANY OVERVIEW

ABOUT TOPEC	06
CEO MESSAGE	08
ORGANIZATION	09
HISTORY	10
VISION 2030	11
GLOBAL ALLIANCE	12
EDUCATION & ESG	13
BUSINESS	14
PROJECT MANAGEMENT	16
PROGRAM MANAGEMENT	18
CONSTRUCTION MANAGEMENT	20
PLANNING & DESIGN	22
URBAN REGENERATION	24
OVERSEAS BUSINESS	26

PROJECT PORTFOLIO

PLANNING & DESIGN	
HOUSING	30
COMMERCIAL / PUBLIC	34
NATIONAL DEFENSE	38
PM / CM	
MEDICAL	42
LOGISTICS HUB / INDUSTRIAL	44
OFFICE / COMMERCIAL(GOVERNMENT)	46
OFFICE / COMMERCIAL(PRIVATE)	48
SHOPPING	50
EDUCATION	52
HOTEL / RESORT	54
HOUSING	56
CULTURE / ASSEMBLY / WELFARE	58
RELIGIOUS	60
HIGH RISE BUILDING	62
NATIONAL DEFENSE	64
OVERSEAS PM / CM	66

TOTAL SOLUTION PROVIDER

PROJECT MANAGEMENT
PLANNING & DESIGN
CONSTRUCTION MANAGEMENT
CONSTRUCTION SUPERVISION
ENGINEERING & CONSULTING

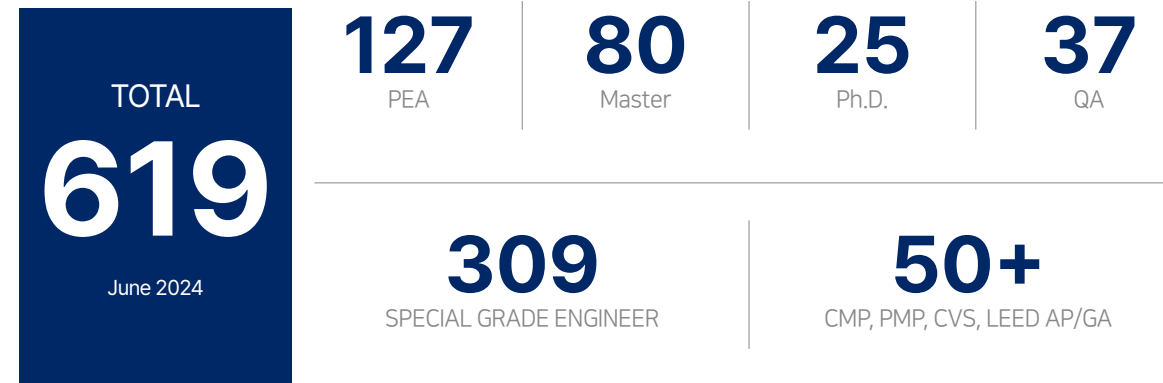
ABOUT TOPEC

Relentlessly making bold leaps to new levels based on reliable management capabilities and performance, TOPEC Engineering is continuously elevating its reputation by successful management of various projects at home and abroad.

CORPORATE CREDIT RATING



DIVERSE IN-HOUSE EXPERTS & ENGINEERS



VIGOROUS ADVANCE INTO GLOBAL MARKET

Ongoing Project

- Iraq-Korea Critical Care Speciality Hospital Project
- Ben Tre province general hospital in Vietnam
- The Project of Establishment of Polytechnic Institute(PTI) for Construction Workforce Development in Province2, Nepal
- Establishment of National College of Education and Teacher Training System at Kuliyaipitiya in Sri Lanka
- Establishment of Fergana Vocational Training Center
- Establishment of Vocational Training Center in Urgench and National Qualification System Primarily in Tashkent VTC in Uzbekistan
- Strengthening Capacity of National Pediatric Hospital in Cambodia
- National Institute of Forensic Science of Mongolia

Completed Project

- Nepal ICT Center, Nepal
- Project for strengthening medical service at children's hospital in Lao PDR
- Establishment of National institute of Advanced Nursing Education and Research in Bangladesh
- Bolivia Oruro Hospital
- Korean Embassy in Vietnam
- National Institute of Civil Aviation (NICA) of Cambodia
- Establishment of PAK-KOREA Testing Laboratory for PV Modules & Allied Equipment
- Pakistan Agricultural and Livestock Technology Capacity Building Center
- Visayas State University Tolosa Campus in Philippines
- The Project of the Nepal Technology Innovation Center(NTIC) in Dhulikhel Campus, Kathmandu University
- Laos Maternal and Child Health Center

**WE BUILD
A BETTER FUTURE**

TOP ENGINEERING CONSULTANT

TOPEC

CEO MESSAGE

TOPEC ENGINEERING consists of a group of experts with diverse experiences in numerous domestic and international projects based on reliable corporate management.

Seeing things from the perspective of clients, striving to repay our client's trust, and providing optimal satisfaction.

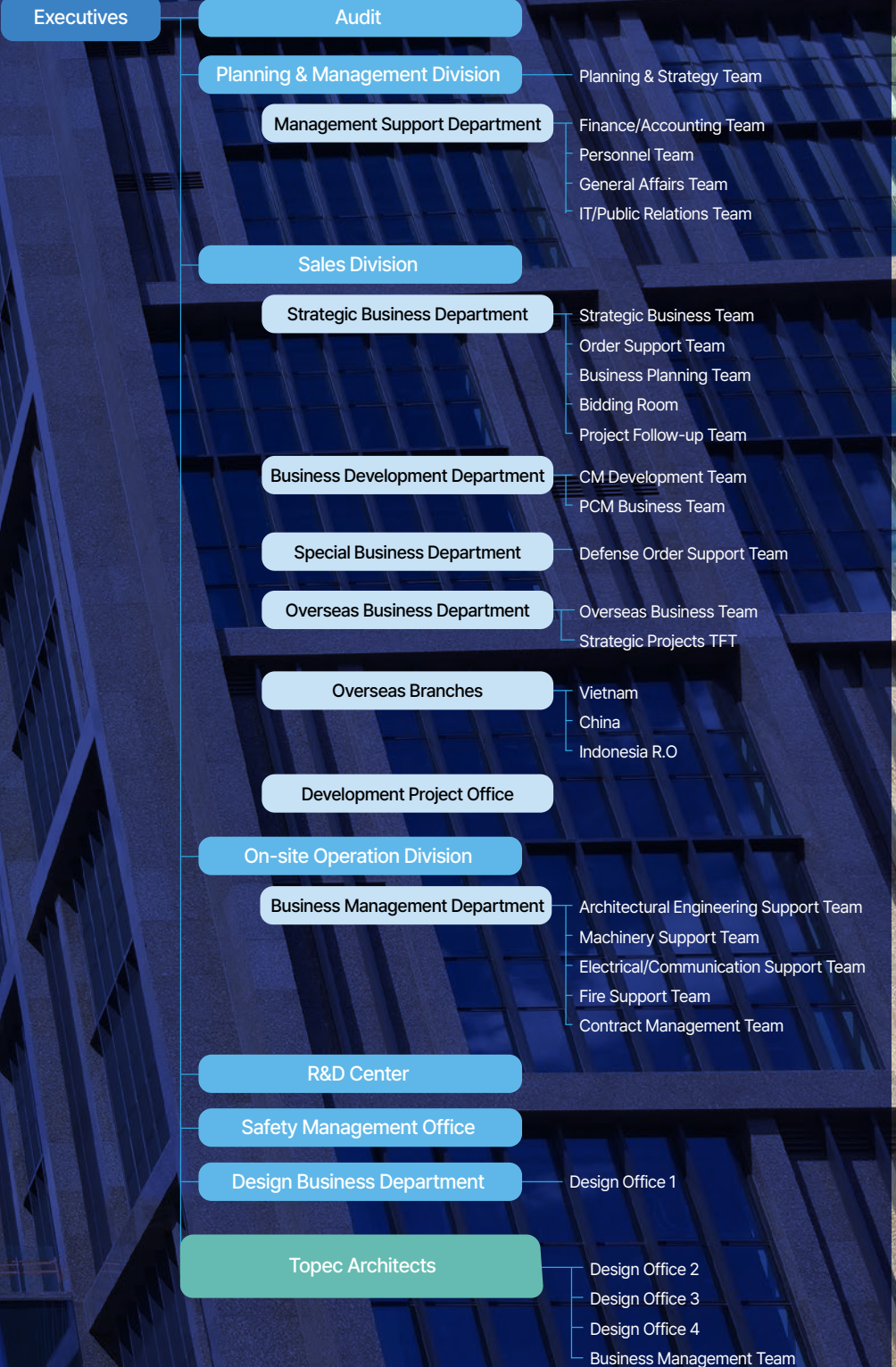
These are the covenants of TOPEC ENGINEERING, your trusted partner.

Since its foundation in 1993, TOPEC ENGINEERING has never stopped evolving through relentless technical development and business innovation.

Following the legacy of experts who established the success of Korean construction, at TOPEC ENGINEERING, diligently exert their very best to unlock innovation and embrace challenges based on trust, our core value.

TOPEC Chairman **JUN SEA KEE**

ORGANIZATION



HISTORY

Since its foundation in 1993, TOPEC ENGINEERING has never stopped evolving through relentless technical development and business innovation. Following the legacy of experts who established the success of Korean construction, at TOPEC ENGINEERING, diligently exert their very best to unlock innovation and embrace challenges based on trust, our core value.

VISION 2030

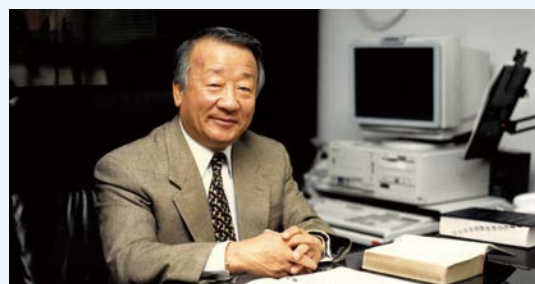
TOPEC ENGINEERING would like to set a clear aim by establishing 'VISION 2030', to challenge the higher position by driving self-innovation. We will advance into the new market by continuous capacity building, self innovation and constitution improvement.



1993~2000

BEGINNING

- 1993. 06 Established TOPEC ENGINEERING
- 1994. 02 Registered for architectural construction supervision business
- 1995. 11 Registered for fire safety facility design and supervision business
- 1995. 12 Registered for overall construction supervision business
- 1997. 04 Registered for power facility construction supervision business
- 1997. 10 Registered as an architectural design firm and renamed to TOPEC ENGINEERING ARCHITECTURAL DESIGN Co.



2001~2020

GROWTH

- 2001. 05 Registered for real estate consulting and academic research service business
- 2001. 07 Registered for building construction business
- 2004. 03 Registered for CM service business for USFK
- 2006. 06 Established a branch in Shenyang, China
- 2007. 06 CM Contract for the Yongsan Relocation Plan



2021~

LEAP

- 2014. 10 Grand Prix in Construction at Jeju Architectural Culture Festival
- 2016. 03 ConsMa 2016 Presidential Award
- 2019. 01 MOU with PROSYS Indonesian company
- 2020. 04 CM Contract for the Global Business Center Construction of Hyundai Motors
- 2020. 12 KOICA Global Business Innovation Award

- 2022. 07 ISO 45001:2018 Occupational Health and Safety Management System Certification
- 2023. 06 TOPEC Engineering 30th foundation day
- 2023. 11 Establishment of Representative Office in Indonesia
- 2023. 12 MOU with WSP Korea



GLOBAL ALLIANCE

TOPEC ENGINEERING conducts technical partnerships and collaboration with global leaders with an open mind based on diversity. Through this, we aim to enhance our global reputation and realize perfect customer satisfaction by maximizing synergy.



YONGSAN RELOCATION PLAN(YRP)



Established in Oregon, the United States in 1946, CH2MHILL is a global engineering company, which was ranked 6th in the Fortune 100 in 2013, and it merged with Jacobs Engineering Group in December 2017. TOPEC ENGINEERING has promoted its CM technology and reputation all over the world by partnering with CH2MHILL, the No.1 CM provider in the United States, for the Yongsan Relocation Plan, which is the largest ever construction project in Korea and also the largest relocation project in the history of overseas U.S.military bases.



Dongducheon Image Culture Complex



Signing of business partnership between TOPEC and the Construction Management Association of America



MOU with WSP Korea



TOPEC ENGINEERING successfully completed a partnership with PARKER DURRANT INTERNATIONAL WORLD GROUP ENGINEERING, a globally renowned architectural design company based in the United States for the planning and design of Dongducheon Image Culture Complex, attaining worldwide public confidence and superior technology.



By establishing a systematic relationship with the Construction Management Association of America and Construction Management Association of Korea, TOPEC ENGINEERING is strengthening its competencies and global competitiveness in CM.



TOPEC ENGINEERING has signed a business agreement with a Korea branch of WSP, a world-leading global engineering consulting firm headquartered in Canada, it makes that TOPEC provides project management and program management of a global top level.

EDUCATION & ESG

Based on the belief that change starts from education, TOPEC ENGINEERING is quickly accepting changes through education designed to foster and disseminate expertise. We also strive to fulfill our corporate social responsibilities through various CSR activities.

EXPERT TRAINING

TOPEC ENGINEERING strives to reduce costs by studying the economic efficiency of design. As part of such efforts, we conduct training through the Korea Construction Value Engineering Research Institute to foster experts. To foster safety experts, we also conduct safety education for our field employees. In addition, to foster CMPs, we also conduct training with external lecturers from Engineers Korea and Construction Management Association of Korea. We also provide LEED training to secure LEED-accredited professionals in preparation for the green construction market.



AI-based architectural design training for experts



Law firm training for legal risk management



Training meeting for section chiefs on new technologies and construction methods

VOLUNTEER ACTIVITIES

TOPEC ENGINEERING's members participate in volunteer activities and talent donation at social welfare facilities that have sisterhood relationships with us. We are committed to fulfilling our responsibility as a company contributing to society through talent donation related to our business, such as renovation of welfare facilities.

SCHOLARSHIP / TALENT DONATION / HABITAT



Donation of TOPEC Hall to Sungaewon of a Child Welfare Institution



Volunteer Activities to clean a Perimeter of Yangjae Stream



Volunteer activities to build a social welfare facility

BUSINESS

GLOBAL TOTAL SOLUTION

We, TOPEC Engineering, provide global total solutions to our clients from our technology and know-how that have been accumulated through our various project experiences.

GLOBAL TOTAL SOLUTION



• PROJECT MANAGEMENT

We support the client's comprehensive business execution from the beginning to the end of a development project, providing business feasibility study, project financing, and so forth.



• PLANNING & DESIGN

We create ideal spaces that our clients are seeking by rational planning and craftsmanship.



• CONSTRUCTION MANAGEMENT

We embody our clients' wishes through rich expertise in a range of areas from planning to design, construction and maintenance.



• CONSTRUCTION SUPERVISION

We pursue optimal performance with our established technology and experience.



• ENGINEERING

We create environments where people are in tune with nature in a convenient and beautiful manner.



• OVERSEAS BUSINESS

We successfully implement overseas project management based on our tremendous and various experiences in domestic construction projects.



• RESEARCH & DEVELOPMENT

We develop technologies to raise our competitiveness in growth potential and core technologies.



• CONSULTING & DEVELOPMENT

We create the best value of an investment with a leading vision and elaborate analysis.



• URBAN REGENERATION

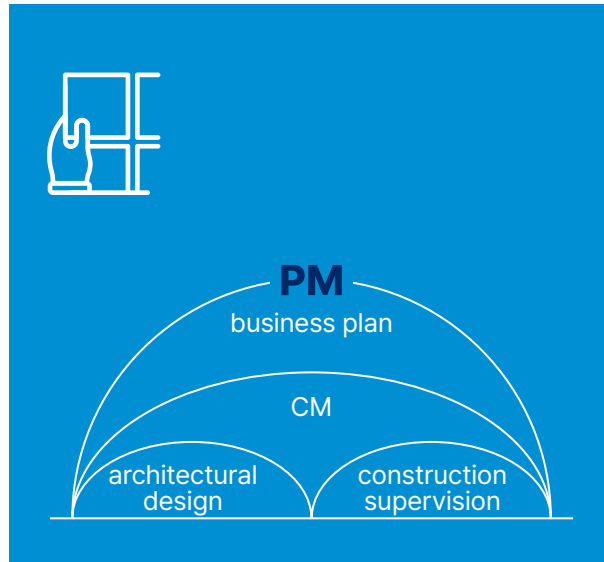
We do our best to maximize our clients' business profits.



• REMODELING

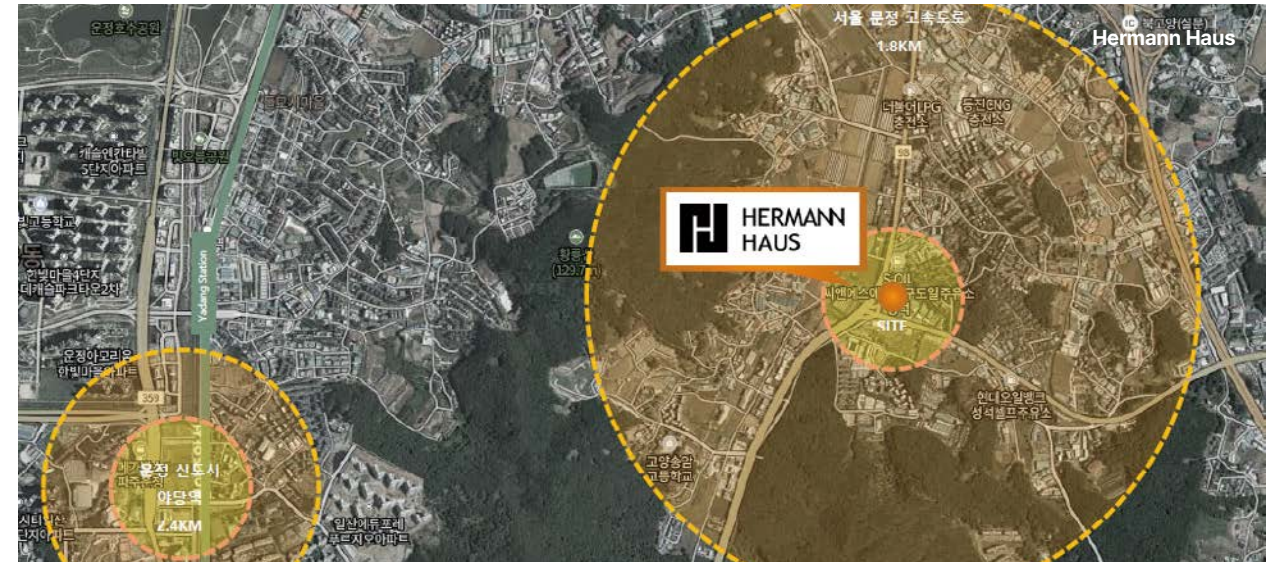
We enhance the asset value of our clients with the most optimal solutions.

PROJECT MANAGEMENT



Establishment of a development plan and review of business feasibility

We provide business profiles of income and expense through review of appropriate product composition and scale through the analysis of the location, use, restrictions, real estate market price, pre-sale rate, regional characteristics, expected pre-sale proceeds, land cost, construction cost, and project cost.



Consulting of Financing

We perform financial tasks related to real estate development such as reviewing financing conditions and structures to help our client select a financial institution for Project Financing.



Design & Construction consent

We perform optimal design and construction consent tasks suitable for the project site.



Contractor selection/sales/settlement

We carry out an optimal tendering process considering the size and characteristics of a project. We also find out the optimal value of rent & sales for the stable cash flow of the project and settlement work will be done at the closing phase.



Enhancement of Business Stability

We provide an integrated comprehensive consultation service on real estate development projects by analyzing relevant reports, roles & responsibilities of our clients as developers, which enhance the stability of the client's business.



PROGRAM MANAGEMENT

Program Management is that in large-scale projects, plans, organizes and executes to manage efficiently all tasks occurring throughout the entire duration of the project.

Yongsan Relocation Plan

The relocation plan project of the U.S. military base, with a total project cost of 16 trillion won and a site area of 14.35 million square meters, is not only the largest in the history of domestic construction but also the largest relocation project among U.S. overseas bases. It was carried out by applying a world-class project management system, where two clients and one project management consortium formed a comprehensive project management office(PMO). The project includes enhancing the military capabilities and command ability for control of the U.S. military, as well as the construction of various facilities such as downtown areas, high schools, and accommodations to ensure that military families can stay comfortably for stationed periods.



CONSTRUCTION MANAGEMENT

Based on our specialized systems and global network, we provide CM services optimized for specific projects, raising the value of customer's assets and future prospects.

1 Conduct feasibility study

We closely review a broad range of core factors in early phases of a project, including site selection and appropriateness and feasibility of the project, and predict possible challenges and establish countermeasures, minimizing the client's risks.

2 Secure VE-based design economic efficiency

By utilizing our VE data bank, we derive design that can reduce project and life cycle costs and maximize facility performance by conducting differentiated VE through design and construction phase.

3 Utilize construction IT technology

By utilizing project management information and know-how based on our T-PMIS, we improve the efficiency of project management and apply best practices, maximizing the performance of project management.

4 Play a role as a total coordinator

We play a role as a total coordinator to facilitate communication among parties to the project and the client's decision making, minimizing claims and suggesting reasonable solutions in case of disputes.

5 Establish a quality guarantee system

We maximize facility performance by establishing a quality management system suitable to the characteristics of the facility through experts in various areas and build optimal facilities by sharing information throughout the process of the project.

6 Improve the efficiency of maintenance

Considering the life cycle of a facility, we establish concrete maintenance plans and prepare maintenance guidelines, improving the overall economic value of the facility.



PLANNING & DESIGN

Architectural design is an integration of arts and technologies to create an ideal space where people and environment are in tune with each other through rational planning. Based on robust teamwork connecting CM, engineering and consulting and creative design competence, TOPEC ENGINEERING continues to create sustainable buildings.



Development of E-Mart Site, Gayang-dong



Reconstruction Project of Gojan 3rd District, Ansan



Highway Rest Area, Chunhyang



GT World

MASTER PLAN

We establish a basic system by systematically planning land use and facility layout from long-term perspectives to accommodate any situational change in the future.

URBAN PLAN

We suggest a large framework suitable to the characteristics of the district, including land use, building coverage and floor area ratio, by examining the entire city and the city planning district from long-term perspectives.

ARCHITECTURAL PLAN

We create ideal space through active communication with the client in the process of planning and basic and working design phases.

INTERIOR DESIGN

We design with a focus on differentiation by extending the uniqueness of the interior space and re-establishing a relationship with the entire inner surface of architecture.



1st Dormitory of Hongik University



Training Center of Jeonju Arboretum of the Korea Highway Corporation



Highway Rest Area, YangPyung



Daegu Catholic University Hospital, Chilgok



KR Records Center

Urban and Residential environment maintenance project



Godeok District 5 (I-PARK)



e-Pyeonhansang Sinchon



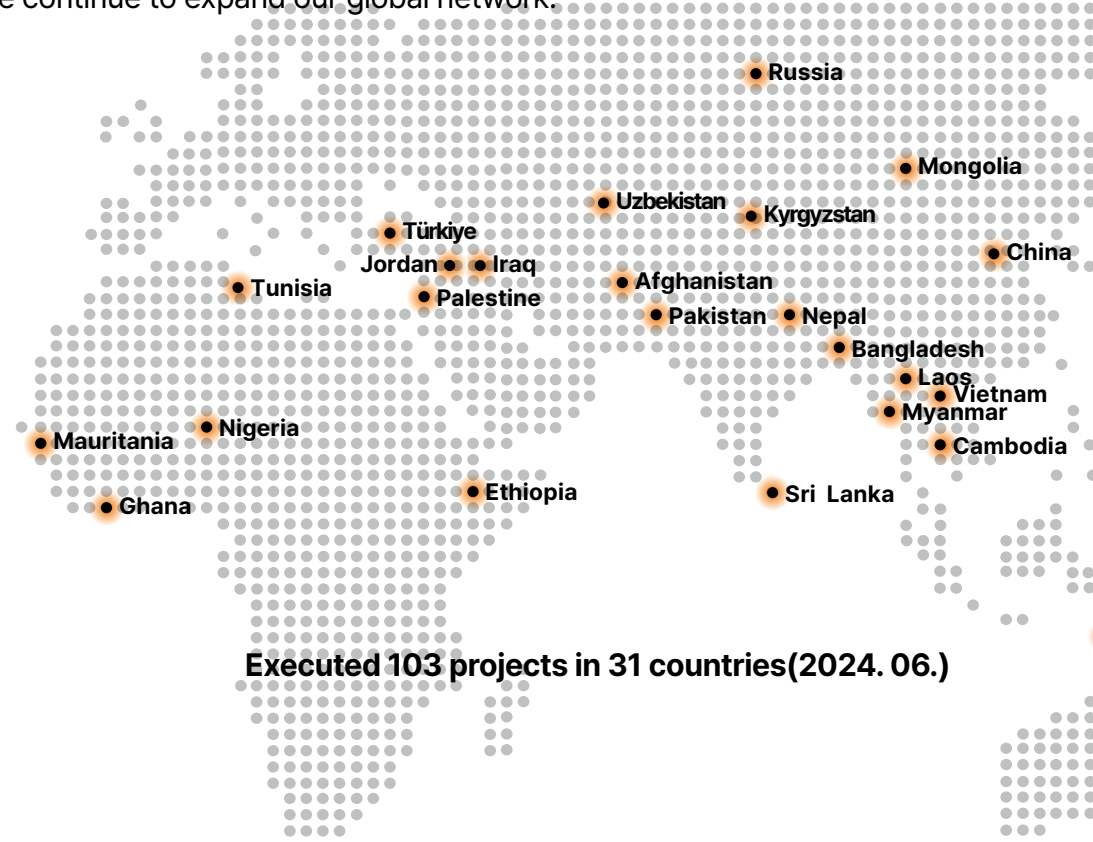
HILLSTATE Lake Songdo 4th phase

Topec Engineering has the highest position on the basis of the construction management capabilities in the fields which are redevelopment and reconstruction and urban environment maintenance projects. Based on its capabilities, we provide customized services to maximize clients' business profits.



OVERSEAS BUSINESS

TOPEC ENGINEERING is carrying out various range of projects in many countries as well as in Korea. With CM services and specialized systems, we continue to expand our global network.



With excellent and well-qualified engineers and architects, TOPEC has successfully completed various projects around the world. Such as hospitals, schools, training centers, and convention centers in Africa, the Middle East, South East Asia, and South America.

TOPEC has established overseas branch office in Vietnam, where close cooperation is underway with local firms in order to expand our PM/CM service in the region. As a major CM service provider to KOICA, we are currently working with them in the countries of Nepal, Pakistan, Sri Lanka, Bangladesh, Uzbekistan, Jordan, Mongolia, Iraq, etc.



PROJECT PORTFOLIO

PLANNING & DESIGN

HOUSING
COMMERCIAL / PUBLIC
NATIONAL DEFENSE

PM / CM

MEDICAL
LOGISTICS HUB / INDUSTRIAL
OFFICE / COMMERCIAL(GOVERNMENT)
OFFICE / COMMERCIAL(PRIVATE)
SHOPPING
EDUCATION
HOTEL / RESORT
HOUSING
CULTURE / ASSEMBLY / WELFARE
RELIGIOUS
HIGH RISE BUILDING
NATIONAL DEFENSE

OVERSEAS PM / CM



HOUSING (REDEVELOPMENT/RECONSTRUCTION)

TOPEC provides a one-stop service that integrates consulting from project planning to architectural design, creating an ideal space where humans and the environment harmoniously coexist.



Seongnam Taepyeong area housing apartments

Location : Seongnam-si, Gyeonggi-do
 Client : Reconstruction association
 Total Floor Area : 213,857m²
 Levels : 2 basement levels ~ 28 ground levels (1,564 Units)

The Taepyeong area is an old downtown region where urban functions are declining due to insufficient infrastructure and aging housing that is over 30 years old, despite a high residential density. This area has been designed with a priority on improving the residential environment, aiming to restore the value of the city and serve as a center for balanced regional development and residential culture. The site plan and building layout have been designed to conform to the land's topography, which has a height difference of over 40 meters, and the concept aims to create a harmonious complex with diverse skylines by utilizing the elevation changes.

1 Daejeon Yongmun 1, 2, 3 housing reconstruction

Location : Seo-gu, Daejeon
 Levels : 3 basement levels ~ 33 ground levels,
 23 Buildings, 2,763 Units

2 Bupyeong Sangok redevelopment project

Location : Bupyeong-gu, Incheon
 Levels : 3 basement levels ~ 45 ground levels,
 14 Buildings, 2,475 Units

3 multi-family housing in Jung-gu Namoe-dong in Ulsan

Location : Jung-gu, Ulsan
 Levels : 2 basement levels ~ 16 ground levels,
 527 Units

4 mixed-use complex in Jungseong-dong, Masan-Happo-gu, Changwon

Location : Changwon-si, Gyeongsangnam-do
 Levels : 4 basement levels ~ 49 ground levels,
 593 Units

5 multi-family housing in Geomo-dong, Siheung.

Location : Siheung-si, Gyeonggi-do
 Levels : 2 basement levels ~ 20 ground levels,
 15 Buildings, 916 Units





Daehyun Cheongsil and Others Street Housing Maintenance Project

Location : Bucheon-si, Gyeonggi-do / Client : Daehyun Cheongsil and Others Street Housing Maintenance Project / Total Floor Area : 34,500.55m² / Levels : 2 basement levels ~ 18 ground levels, 9 Buildings, 489 Units

The Daehyun Cheongsil Old housing redevelopment project is the first case in Bucheon City to acquire an floor area ratio incentive by the intelligent building certification. By optimizing the layout to fit the compact site, the project presents residential spaces that prioritize the safety, convenience, and community of residents. The units are designed to enhance energy efficiency and allow for natural light and ventilation by ensuring south-facing exposure. Additionally, the design aims to create a more pleasant and convenient living environment by minimizing elevation differences according to the terrain.



1 Reconstruction of Goddeok Jugong Complex 6

Location : Gangdong-gu, Seoul
Levels : 3 basement levels ~ 29 ground levels,
19 Buildings, 1,824 Units

2 Small-Scale Reconstruction Project of Daejin Apartment

Location : Michuhol-gu, Incheon
Levels : 3 basement levels ~ 39 ground levels,
2 Buildings, 489 Units

3 Reconstruction Maintenance Project of District 1 in Daechi-dong

Location : Gangnam-gu, Seoul
Levels : 3 basement levels ~ 18 ground levels,
9 Buildings, 489 Units

4 Housing Redevelopment Maintenance Project of Zone 9 in Sindang

Location : Jung-gu, Seoul
Levels : 6 basement levels ~ 7 ground levels,
7 Buildings, 315 Units

5 Reconstruction of Guwol Jugong Complexes 1, 2, and 3

Location : Namdong-gu, Incheon
Levels : 2 basement levels ~ 37 ground levels,
110 Buildings, 8,934 Units

COMMERCIAL / PUBLIC FACILITIES



Chupungnyeong Rest Area

Location : Gimcheon-si, Gyeongsangbuk-do / Client : Korea Expressway Corporation / Total Floor Area : 2,997m²

The Chupungnyeong Rest Area (Seoul Direction) is located at the center of the Gyeongbu Expressway, the first expressway in South Korea connecting Seoul and Busan. It holds significant historical meaning due to "Completion Monument" situated in the northwest of the site. The newly established Chupungnyeong Rest Area is designed to harmonize with the eco-friendly image of Gimcheon City, alongside its historical significance. The mass form of the rest area reflects the image of development and leap forward through the Gyeongbu Expressway, incorporating the logo of Gimcheon City and the city slogan "Central Gimcheon." The streamlined eaves serve as a design element that emphasizes local characteristics, representing the clean city image of Gimcheon by embodying the mountain ranges of Geumo Mountain and Daedeok Mountain, thereby highlighting the elegant image of Gimcheon.



1 Korea Expressway Corporation Miryang Branch

Location : Miryang-si, Gyeongsangnam-do
Levels : 1 basement levels ~ 2 ground levels

2 Suwon Gokbanjeong-dong Shopping Complex

Location : Suwon-si, Gyeonggi-do
Levels : 3 basement levels ~ 6 ground levels

3 Shindorim Garage Relocation Site Gymnasium

Location : Guro-gu, Seoul
Levels : 1 ground levels ~ 2 ground levels

4 Energy Industry Convergence Complex

Location : Gunsan-si, Jeonbuk-do
Levels : 1 basement levels ~ 5 ground levels

5 Jeju Eastern District National Sports Facility

Location : Jeju-si, Jeju-do
Levels : 1 basement levels ~ 3 ground levels





Gayang-dong E-Mart Site

Location : Gangseo-gu, Seoul / Client : K-SQUARE Grand Gangseo PFV / Total Floor Area : 137,066m² / Levels : 4 basement levels ~ 36 ground levels

The target site, with its convenient transportation, visibility, and high demand value, is the optimal location for constructing high-value officetels. While there is a desire to escape daily life and dream of a resort-like environment, the pandemic has led to the trend of staycations, where people prefer to stay not far from their residences. In response to this phenomenon, we have planned not only to enhance the livability of residential units but also to create specialized communal spaces for residents. While on the entrance level, there are the public open space and community facilities for the public, on the other levels, we have designed facilities exclusively for residents, such as a sky lounge that allows them to enjoy the urban landscape. Through these diverse community facilities, we propose a mixed-use complex that enables residents to enjoy a premium lifestyle within their living environment, creating a vibrant urban landscape. This plan envisions a city that can adapt flexibly to the passage of time and a sustainable metacity that coexists harmoniously with nature.



1 Jeju Hallim Daerim-ri National Rental Housing

Location : Jeju-si, Jeju-do
Levels : 1 basement levels ~ 11 ground levels,
2 Buildings, 72 Units

2 Hyangdong Community Sports Center

Location : Guro-gu, Seoul
Levels : 1 ground levels ~ 2 ground levels

3 Magok District Target Research Facility

Location : Gangseo-gu, Seoul

4 Wonju Namgwon District Complex Sports Center

Location : Wonju-si, Gangwon-do
Levels : 1 basement levels ~ 2 ground levels

5 Kim Man-deok Memorial Hall

Location : Jeju-si, Jeju-do
Levels : 1 ground levels ~ 3 ground levels

6 Jeju Complex Gymnasium

Location : Jeju-si, Jeju-do
Levels : 1 ground levels ~ 4 ground levels

NATIONAL DEFENSE FACILITIES

The accumulated experience and know-how of Topec, gained through various defense projects, have become a significant asset in carrying out defense design. Based on it, we are building a specialized area in defense design by deeply understanding the characteristics of defense facilities.



- 1 Relocation Project of the National Defense University
- 2 Jeju Naval Base
- 3 Cathedral
- 4 National Cemetery of Seoul
- 5 Officer Quarters of the Combat Air Wing
- 6 Naval Officer's Residence





- 1 Army Surion Maintenance Training Center
- 2 Air Force Officers' Club
- 3 Army Officers' Quarters
- 4 Gyeryongdae Review Stand
- 5 Naval Search and Rescue Headquarters
- 6 Naval Recreation Facilities
- 7 Marine Corps Comprehensive Welfare Center



MEDICAL FACILITIES



Chilgok Kyungpook National University Clinical Training Building

Location : Buk-gu, Daegu / Client : Kyungpook National University Chilgok Hospital / Total Floor Area : 92,144m²
 Levels : 5 basement levels ~ 15 ground levels, 700beds

With the relocation of the Kyungpook National University School of Medicine to Chilgok, a 700-beds clinical training building has been established to strengthen its functions as an educational and research hospital and to improve the inadequate medical environment. The Chilgok Kyungpook National University Hospital, with a total capacity of 1,300 beds, is committed to training competent medical personnel and faithfully carrying out public health projects, aiming to become not only a representative medical institution for the region but also a leading hospital in Korea.



1 Keimyung University Dongsan Medical Center

Location : Dalseo-gu, Daegu
 Levels : 5 basement levels ~ 20 ground levels

2 Pusan National University Hospital

Location : Yangsan-si, Gyeongsangnam-do
 Levels : 2 basement levels ~ 12 ground levels, 1,280beds

3 Seoul Medical Center

Location : Jungnang-gu, Seoul
 Levels : 4 basement levels ~ 13ground levels, 620beds

4 The Chatholic Univ. of Korea Bucheon St.Mary's Hospital

Location : Bucheon-si, Gyeonggi-do
 Levels : 6 basement levels ~ 10 ground levels, 322beds

5 Expansion Construction of D Building at Asan Medical Center in Seoul

Location : Songpa-gu, Seoul
 Levels : 5 basement levels ~ 10 ground levels



LOGISTICS HUB / INDUSTRIAL FACILITIES



Hwasung Dongtan Distribution Complex

Location : Hwaseong-si, Gyeonggi-do / Client : HL Logis&Co / Total Floor Area : 872,270m²
 Levels : 2 basement levels ~ 4 ground levels

The Hwaseong Dongtan Logistics Complex is located near the Gyeongbu Expressway, designed to meet the logistics demands of the metropolitan area and contribute to the development of the local economy in various fields, including increased national and local tax revenues, job creation, and population influx. Currently, the companies operating in the complex are CJ Logistics, HL Holdings, SPL, Gmarket, and Coupang etc.



1 Hwaseong Wolmun-ri Logistics Center

Location : Hwaseong-si, Gyeonggi-do
 Levels : 2 basement levels ~ 4 ground levels

2 Iris Korea Songdo Factory

Location : Yeonsu-gu, Incheon
 Levels : 1 basement levels ~ 7 ground levels

3 Korea Refrigeration Distribution Center

Location : Anseong-si, Gyeonggi-do
 Levels : 1 ground levels ~ 4 ground levels

4 Kia Motors Hwaseong New Plant

Location : Hwaseong-si, Gyeonggi-do
 Levels : 1 ground levels~4 ground levels



Hyundai Motors Ulsan Electric Vehicle New Plant

Location : Buk-gu, Ulsan / Client : HYUNDAI MOTOR COMPANY / Levels : 1 ground levels ~ 3 ground levels

This the largest electric vehicle dedicated-factory in South Korea is situated on a site of 548,000 square meters (approximately 166,000 pyeong) and has the capacity to produce 200,000 electric vehicles annually. With the launch of this electric vehicle factory, there are expectations that Ulsan will become an innovative mobility city leading the electrification era. The factory is scheduled for completion in 2025 and is set to begin mass production in 2026. It will operate as a future-oriented factory that prioritizes the safety and convenience of workers, as well as efficient operations, by applying a manufacturing innovation platform developed at the Singapore Global Innovation Center (HMGICS)



OFFICE / COMMERCIAL BUILDING(GOVERNMENT)



Seongnam Industrial Complex Regeneration Complex Knowledge Industry Center

Location : Seongnam-si, Gyeonggi-do / Client : LH / Total Floor Area : 83,506m² / Levels : 4 basement levels ~ 23 ground levels

This project was initiated to improve the weakening competitiveness of businesses due to the aging of the existing Seongnam General Industrial Complex and the lack of infrastructure. It aims to serve as a central hub for the industrial complex while facilitating communication and community engagement with the surrounding area, through the establishment of adjacent residential facilities (LH Happy Housing) and a comprehensive welfare center for workers from the local government (Seongnam City Hall). This initiative is a collaborative effort between the public and private sectors.



1 Government Complex in Sejong

Location : Sejong-si
Levels : 1 basement levels ~ 6 ground levels

2 Incheon Coast Guard Headquarters

Location : Seo-gu, Incheon
Levels : 1 basement levels ~ 4 ground levels

3 National Tax Service Sejong District Office

Location : Sejong-si
Levels : 1 basement levels ~ 2 ground levels

4 Training Institute of Land, Transport and Maritime Affairs

Location : Seogwipo-si, Jeju-do
Levels : 1 basement levels ~ 4 ground levels

5 Regional Government Complex in Busan

Location : Geumjeong-gu, Busan
Levels : 1 basement levels ~ 4 ground levels

6 Regional Government Complex in Goyang

Location : Goyang-si, Gyeonggi-do
Levels : 2 basement levels ~ 7 ground levels



OFFICE / COMMERCIAL BUILDING(PRIVATE)



Gasan DK Tower

Location : Geumcheon-gu, Seoul / Client : DongKwang International Corp / Total Floor Area : 86,206m² /
Levels : 4 basement levels ~ 20 ground levels

The location is adjacent to the Gasan Digital Complex Station on Subway Line 1 and Line 7, situated in the Gasan Digital 3rd Complex, which is home to over 12,000 companies, including IT and venture firms. It features a stunning exterior, landscaping, community spaces, and dormitories, all characterized by specialized internal and external designs. The site has enhanced vehicle accessibility with a drive-in system for logistics movement and a door-to-door system.



1 NXC Headquarters

Location : Jeju-si, Jeju-do
Levels : 1 basement levels ~ 4 ground levels

2 Macrogen Songdo Genome Center

Location : Yeonsu-gu, Incheon
Levels : 1 basement levels ~ 8 ground levels

3 Far East Broadcasting Company Headquarters

Location : Mapo-gu, Seoul
Levels : 4 basement levels ~ 7 ground levels

4 Ilsan Baekseok-dong Office Facility

Location : Goyang-si, Gyeonggi-do
Levels : 4 basement levels ~ 20 ground levels

5 Tokyo Electron Korea Pyeongtaek Office

Location : Pyeongtaek-si, Gyeonggi-do
Levels : 1 basement levels ~ 5 ground levels

6 Bystronic Korea Songdo Office

Location : Yeonsu-gu, Incheon
Levels : 1 basement levels ~ 3 ground levels

SHOPPING FACILITIES



Busan Premium Outlet

Location : Gijang-gun, Busan / Client : Shinsegae Simon Co. / Total Floor Area : 127,310m² / Levels : 3 basement levels ~ 4 ground levels

The Busan Premium Outlet 2.0 aims to become a new shopping landmark for the 7.5 million residents of Busan and the surrounding Gyeongnam area by undergoing a large-scale renewal and expansion that offers premium brands and spatial competitiveness surpassing that of shopping centers in the metropolitan area. Notably, the global company Arcadis, which oversaw the Burj Khalifa project in Dubai, is also involved in this project. The expansion includes approximately 18,600 square meters of new shopping space, with over 50% of the common areas designed as green spaces and rest areas, maximizing the advantages of an outdoor outlet.



Paju Premium Outlet

Location : Paju-si, Gyeonggi-do / Client : Shinsegae Simon Co. / Total Floor Area : 78,133m² / Levels : 1 basement levels ~ 2 ground levels

The Paju Premium Outlet, located in a massive commercial area with over 20 million people including Seoul, Paju, Ilsan, Gimpo and Uijeongbu, is expected to attract 4 million shopping tourists annually and create an employment effect of over 3,000 jobs. It is a large shopping mall that promises significant economic impact.



1 IKEA Gangdong

Location : Gangdong-gu, Seoul
Levels : 1 basement levels ~ 2 ground levels

2 Yeosu Premium Outlet

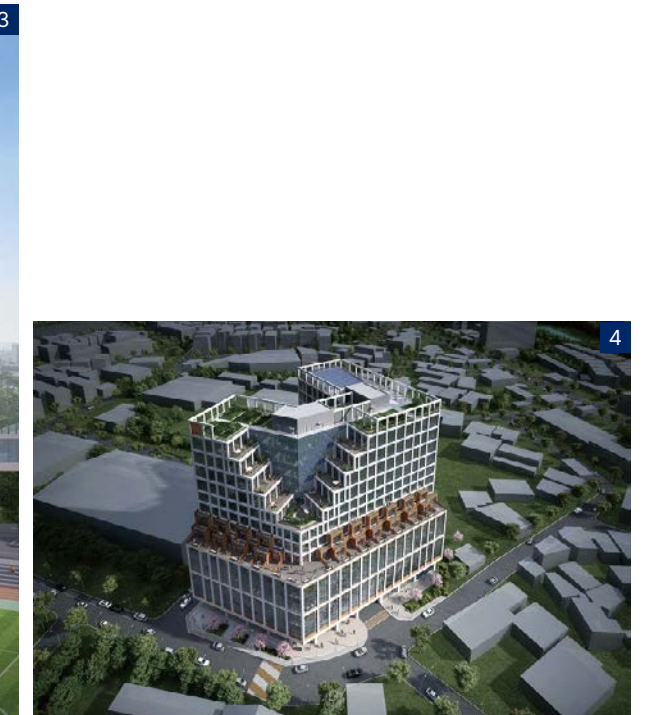
Location : Yeosu-si, Gyeonggi-do
Levels : 2 basement levels ~ 4 ground levels

3 Siheung Premium Outlet

Location : Siheung-si, Gyeonggi-do
Levels : 3 basement levels ~ 4 ground levels



EDUCATION FACILITIES



Magok E-Land R&D Center

Location : Gangseo-gu, Seoul / Client : E-LAND / Total Floor Area : 246,003m² / Levels : 5 basement levels ~ 10 ground levels

It was established with the goal of creating a world-class fashion research institute and museum, as well as a cutting-edge F&B research center. The establishment of this large corporate research institute is expected to generate numerous job opportunities and contribute to the growth of the Magok-dong commercial area, thereby helping to revitalize the surrounding economy.



1 Hyundai Motor Company Uiwang Research Institute

Location : Uiwang-si, Gyeonggi-do
Levels :
Research Division (2 basement levels ~ 1 ground levels),
Parking lot (1 ground levels ~ 4 ground levels),
Main building (16 ground levels ~ 22 ground levels)



2 Inha University 60th Anniversary Memorial Hall

Location : Michuhol-gu, Incheon
Levels : 1 basement levels ~ 15 ground levels

3 Hanyang University Gu Ja-gyeom Mechanical Engineering Building

Location : Seongdong-gu, Seoul
Levels : 2 basement levels ~ 10 ground levels

4 Suwon Knowledge Industry Center

Location : Suwon-si, Gyeonggi-do
Levels : 3 basement levels ~ 13 ground levels

5 Spigen Korea Corporate Research Institute

Location : Gangnam-gu, Seoul
Levels : 2 basement levels ~ 6 ground levels



HOTEL / RESORT



Yeosu the Ocean Resort

Location : Yeosu-si, Jeollanam-do / Client : Ilsang Ocean Industry Co. / Total Floor Area : 82,318m² / Levels : 2 basement levels ~ 17 ground levels
 Yeosu the Ocean Resort, which solely connects the two marine national parks in the country, is positioned as a marine resort representing Yeosu, an international marine tourism city, with all its facilities facing the sea. In particular, it is easily accessible for tourists via high-speed rail (KTX) and air travel, as well as highways from Daejeon and Gyeongnam. Additionally, the recently completed Yeosu-Gohung bridge and causeway in 2020 further facilitate access for visitors.



Yangyang Naksan Lifestyle Accommodation Facility

Location : Yangyang-gun, Gangwon-do / Client : WOORI ASSET TRUST Ltd.
 Total Floor Area : 21,101m² / Levels : 6 basement levels ~ 20 ground levels (438실)
 Built in Yangyang, where the highest demand for surfing in the country exists, this villa-style second home is a modern accommodation facility situated by the East Sea, located less away than 100 meters from Naksan Beach. Additionally, it is easily accessible from the metropolitan area due to the Dongseo High-Speed Railway (KTX), which is scheduled to open in 2026, and the expressway connecting Seoul and Yangyang.



1 Dormy Inn Seoul Gangnam (Yeoksam-dong)

Location : Gangnam-gu, Seoul
 Levels : 2 basement levels ~ 16 ground levels,
 220 room

2 Arirang Hill Dongdaemun

Location : Seongbuk-gu, Seoul
 Levels : 2 basement levels ~17 ground levels,
 190 room

3 Hanyang Country Club Clubhouse

Location : Goyang-si, Gyeonggi-do
 Levels : 1 basement levels ~ 2 ground levels

4 Ramada Encore Jeju East Hotel

Location : Seogwipo-si, Jeju-do
 Levels : 2 basement levels ~ 10 ground levels

5 Grant Kensington Seorak Beach

Location : Goseong-gun, Gangwon-do
 Levels : 2 basement levels ~ 7 ground levels



HOUSING (REDEVELOPMENT/RECONSTRUCTION)



HILLSTATE Lake Songdo 4

Location : Yeosu-gu, Incheon / Client : SLC / Total Floor Area : 263,442m²

Levels : 2 basement levels ~ 36 ground levels, 12 Buildings, 1,319 Units

Songdo Hillstate Lake 4th Phase is located in a pleasant environment, with nearby landmarks such as the 3rd Waterfront Park of Songdo Landmark City and the Neighborhood Park of Songdo Landmark City. There are elementary and middle schools within walking distance, as well as Chadwick International School and the Science and Arts Gifted School, providing an excellent educational environment. Additionally, there are abundant living infrastructure facilities, including Costco and Hyundai Premium Outlet. The transportation environment is convenient, with easy access to the Gyeongin Expressway via Aam Road and Incheon Bridge, as well as smooth entry to the 2nd and 3rd Gyeongin Expressways.



1 Paju Unjeong 3rd District A20BL Apartment

Location : Paju-si, Gyeonggi-do

Levels : 1 basement levels ~ 26 ground levels, 9 Buildings, 612 Units

2 Sangdo Starrium Apartment Complex

Location : Dongjak-gu, Seoul

Levels : 5 basement levels ~ 35 ground levels, 11 Buildings, 2,002 Units

3 Reconstruction Project of Goduk 5th Complex

Location : Gangdong-gu, Seoul

Levels : 2 basement levels ~ 29 ground levels, 19 Buildings, 1,745 Units

4 Reconstruction Project of Bangbae Samick

Location : Seocho-gu, Seoul

Levels : 5 basement levels ~ 27 ground levels, 8 Buildings, 721 Units

5 Dogok Lexel Apartment

Location : Gangnam-gu, Seoul

Levels : 2 basement levels ~ 23 ground levels, 34 Buildings, 3,002 Units

6 Wooam District 1 Housing Redevelopment and Maintenance Project

Location : Nam-gu, Busan

Levels : 5 basement levels ~ 36 ground levels, 17 Buildings, 2,205 Units



CULTURE / ASSEMBLY / WELFARE FACILITIES



Jeju Shinhwa History Park

Location : Seogwipo-si, Jeju-do / Client : JDC / Area : 3,985,601m²

The Jeju Shinhwa History Park, which has achieved the largest foreign direct investment in the domestic tourism industry at \$1.5 billion, is composed of four distinct zones. It features a theme park and resort inspired by various global myths, a themed street and wellness resort based on Eastern history and culture, a European-style resort and dining culture theme hall, as well as an aerospace museum and a park where visitors can experience Jeju's mythical elements. Additionally, to promote mutual growth with the local community, over 50% of the construction contracts are awarded to local companies during the construction phase, and 80% of the hiring for operations upon opening is prioritized for local residents, thereby implementing various initiatives for collaborative growth.



National Ecology Center

Location : Seocheon-gun, Chungcheongnam-do / Client : Ministry of Environment / Total Floor Area : 58,553m²

Levels : 1 ground levels ~ 3 ground levels

The National Ecology Center is the largest ecological exhibition hall in the country, established for the purposes of ecology and ecosystem research, investigation, exhibition, and public education. It operates an eco-room where visitors can observe plants and animals from the five major climates of the world. The center is home to the endangered golden frog and is the only place in the country where visitors can see the captured black stork.



1 Suwon Seryu Urban Regeneration Community Center

Location : Suwon-si, Gyeonggi-do

Levels : 2 basement levels ~ 3 ground levels

2 KINTEX in Ilsan City

Location : Goyang-si, Gyeonggi-do

Levels : 1 basement levels ~ 3 ground levels

3 Gogi-dong Senior Welfare Housing

Location : Yongin-si, Gyeonggi-do

Levels : 3 basement levels ~ 15 ground levels

4 Joun-dong Imagination Community Center

Location : Chuncheon-si, Gangwon-do

Levels : 2 basement levels ~ 3 ground levels

5 Gwanggyo Senior Welfare Center

Location : Suwon-si, Gyeonggi-do

Levels : 1 basement levels ~ 4 ground levels

6 Taekwondo Park, Muju, Jeonbuk

Location : Muju-gun, Jeonbuk-do

Levels : 3districts, 24 Buildings



RELIGIOUS FACILITIES



Shin-gil Church

Location : Yeongdeungpo-gu, Seoul / Client : Shin-gil Church / Total Floor Area : 33,233m² / Levels : 6 basement levels ~ 7 ground levels

Shin-gil Church, which has a history of nearly 80 years starting with its founding worship service in 1946, relocated to its current location in April 2013. A distinctive feature of Shin-gil Church is that it operates not only as a space for existing christians but also includes facilities such as a café and a kids' café on the first floor and in the basement. This design creates a space that is not limited to specific users, but rather accessible to all visitors, thereby enhancing accessibility to the church.



1 Joyful Church World Mission Center

Location : Gwangju-si, Gyeonggi-do
Levels : 1 basement levels ~ 40 ground levels

2 Namseoul Church Education Center

Location : Seocho-gu, Seoul
Levels : 4 basement levels ~ 4 ground levels

3 Global Village Church Suji Sanctuary

Location : Yongin-si, Gyeonggi-do
Levels : 4 basement levels ~ 2 ground levels

4 Eunpyeong Church Vision Center

Location : Eunpyeong-gu, Seoul
Levels : 2 basement levels ~ 6 ground levels

5 Catholic Archdiocese of Seoul Imun-dong Cathedral

Location : Dongdaemun-gu, Seoul
Levels : 2 basement levels ~ 3 ground levels

6 Won Buddhism Jagok Temple

Location : Gangnam-gu, Seoul
Levels : 3 basement levels ~ 5 ground levels

HIGH RISE BUILDING

A Highrise Building retains various complex functions, and it's crucial for thorough preparation, rational composition of organization, securing the specialized technical knowledge for control of design firms, constructors, subcontractors, professional consultants by field. Also, it's needed for the successful project that risk management as per grand scale investment, and thorough plan on initial phase due to numerous labor, material, equipments, and improvement of project completion level through construction management ranging from cost management to procedure, design management, minimizing time loss and balanced cost management.



Global Business Complex(GBC)(initial plan)

Location : Gangnam-gu, Seoul / Client : HYUNDAI MOTOR COMPANY / Total Floor Area : 913,955m² / Levels : 105 ground levels

The Hyundai Motor Group is pursuing the need for a standalone headquarters to enhance management efficiency by consolidating its subsidiaries, which are dispersed across Jongno-gu and Seocho-gu. The Hyundai Motor Integrated New Headquarters Project is expected to become a landmark in Seoul as a high-rise building. The GBC is anticipated to consist of a citizen-friendly space, integrating not only office facilities but also exhibition, convention, performance venues, retail spaces, and hotels, along with an organic connection to urban green spaces.



1 Haeundae Central PRUGIO

Location : Haeundae-gu, Busan
Levels : 6 basement levels ~
43 ground levels

2 Busan International Finance Center

Location : Nam-gu, Busan
Levels : 4 basement levels ~
63 ground levels

3 Siji Kolon Sky View, Daegu

Location : Suseong-gu, Daegu
Levels : 5 basement levels ~
46 ground levels



NATIONAL DEFENSE FACILITIES

TOPEC ENGINEERING, which carries out various defense facility projects such as barracks, executive accommodations, research institutes, and religious facilities, has successfully built relationships with clients, receiving high praise not only for its performance but also for project evaluations, along with awards from various organizations.



Army Seosan Barracks



National Defense University Joint Training Center



Aerospace Medical Research Institute



Army Reception Battalion



Navy Headquarters



Ministry of National Defense



Air Force Club



Jinhae Single Soldiers' Quarters



Air Force Daegu Barracks



Army Pocheon Barracks

TOPEC is expanding its global network around the world based on its experience in carrying out 103 projects in 31 countries.

CULTURAL/ASSEMBLY FACILITIES



Hambantota International Conference Center, Sri Lanka

Location : Hambantota, Sri Lanka / Total Floor Area : 16,024m²
Levels : 2 Buildings, 1500 seats

The largest international conference hall in Sri Lanka, with a capacity of 1,500 seats, hosted the main event of the Commonwealth Heads of Government Meeting (CHOGM), which includes representatives from 53 countries. The conference hall, which symbolizes economic development with the goal of strategically fostering Sri Lanka's second-largest city, attracts over 500 visitors daily, representing more than just simple aid.



Da Bien Island Complex Cultural Space, Ho Chi Minh City, Vietnam

Location : Hue, Vietnam
Levels : Culture Facility 2 ground levels, Bridge 1 ground level

OFFICE / COMMERCIAL BUILDING



Railway Traffic Control Center, Mongolia

Location : Ulaanbaatar, Mongolia / Total Floor Area : 3,136m²
Levels : 1 basement levels ~ 5 ground levels

The project titled 'Establishment of a Master Plan for the Integrated Railway Safety Control System and the Construction of the Railway Traffic Control Center (RTCC)' aims to enhance the accessibility, safety, and transport capacity of Mongolia's railway network, both domestically and internationally. This initiative seeks to overcome the limitations of being a landlocked country and improve the competitiveness of the railway sector.

1 Immigration Office Building, Laos

Location : Vientiane, Laos
Levels : 5 ground levels

2 Chamber of Commerce, Uzbekistan

Location : Tashkent, Uzbekistan
Levels : 1 basement levels ~ 2 ground levels



EMBASSY BUILDING



Embassy of the Russian Federation

Location : Moskva, Russia / Total Floor Area : 9,202m² / Levels : 1 basement levels ~ 5 ground levels

The remodeling of the Embassy of the Republic of Korea, established in Moscow in 2003 following the establishment of diplomatic relations between Korea and the Soviet Union in 1990, involves architectural, mechanical, and electrical (including security) upgrades. This modernization project aims to respond to the changes of the times.



1 Embassy of Vietnam

Location : Hanoi, Vietnam
Levels : Embassy : 1 basement levels ~ 3 ground levels,
Official residence : 3 ground levels

2 Embassy of Argentina

Location : Buenos Aires, Argentina
Levels : 2 ground levels

3 Embassy of Türkiye

Location : Ankara, Türkiye
Levels : 2 basement levels ~ 4 ground levels



MEDICAL FACILITIES



Běn Tre General Hospital, Vietnam

Location : Běn Tre, Vietnam / Total Floor Area : 41,121m² / Levels : 5 ground levels, 500beds

This project involves the construction of a comprehensive hospital with 500 beds, along with the supply of medical equipment and consulting services, to meet the annual demand of 700,000 diagnostic and medical services in Běn Tre Province, Vietnam. By providing high-quality medical services, it enables the establishment of a human-centered and safe city. The project addresses the continuously increasing demand for medical services, supports the training of excellent medical personnel, and connects our country's medical services with medical IT and other sectors.



1 Nuwakot Hospital, Nepal

Location : Nuwakot, Nepal
Levels : 3 ground levels, 50beds

2 Oruro Hospital, Bolivia

Location : Oruro, Bolivia
Levels : 2 ground levels, 107beds

3 Mugu Hospital, Nepal

Location : Mugu, Nepal
Levels : 2 ground levels, 80beds

4 Quang Tri Province Comprehensive Rehabilitation Center for the Disabled, Vietnam

Location : Quang Tri, Vietnam
Levels : 3 ground levels

5 Ang Duong Eye Specialty Hospital, Cambodia

Location : Phnom Penh, Cambodia
Levels : 4 ground levels, 44beds

6 Intensive Care Hospital, Iraq

Location : Baghdad, Iraq
Levels : 4 ground levels, 70beds



EDUCATION FACILITIES



Bangladesh Graduate School of Nursing

Location : Dacca, Bangladesh / Total Floor Area : 9,163m² / Levels : 7 ground levels

The National Institute of Advanced Nursing Education and Research (NIANER) is the first graduate school of nursing in Bangladesh, established as the country's first institution for master's education in nursing. It is accredited by the Ministry of Health and Family Welfare (MOHFW) and Bangabandhu Sheikh Mujib Medical University (BSMMU). The program offers six specializations: geriatric nursing, women's health nursing, pediatric nursing, psychiatric nursing, community health and nursing, and nursing management.

This campus is located in Mudapara, Dhaka, Bangladesh, and provides an educational environment equipped with the latest equipment and facilities. It is a project that is expected to enhance the level of nursing education and practice in Bangladesh.



1 Cambodia National Incubation Center

Location : Phnom Penh, Cambodia
Levels : 4 ground levels

2 Nepal ICT Center

Location : Tribhuvan, Nepal
Levels : 5 ground levels

3 Uzbekistan Urgench Vocational Training Center

Location : Fergana, Uzbekistan
Levels : 3 ground levels

4 Sri Lanka Technical Teacher Training School

Location : Kuliyaipitiya, Sri Lanka
Levels : Academic Bldg : 4 ground levels
Workshop Bldg : 3 ground levels

5 Uzbekistan Fergana Vocational Training Center

Location : Urgench/Tashkent, Uzbekistan
Levels : 2 ground levels

6 Jordan Zarqa Technical College

Location : Zarqa, Jordan
Levels : 2 ground levels

7 Nepal Vocational School in the Construction Sector

Location : Province2, Nepal
Levels : 3 ground levels



TOPEC Engineering : 29, Nonhyeon-ro 28-gil, Gangnam-gu, Seoul(Topec Building, Dogok-dong) +82.70.7609.4118

TOPEC Architectural Firm : 3rd floor, 14, Nonhyeon-ro 30-gil, Gangnam-gu, Seoul(Dogok-dong, Lotto Building) +82.70.7609.4351

